



Xport™ Lubricant Application

Xport™ Open Gear Spray Systems

Maximum protection for gear and pinion sets on ball mills and kilns

LE's Xport™ Open Gear Spray Systems incorporate proven intermittent spray technology to reduce lubricant consumption while ensuring open gears are properly lubricated. These systems monitor both the lubricant and airflow to the nozzle tip, ensuring the right amount of lubricant is delivered at the right time. Using one of these systems to lubricate your open gears will create more operational uptime and reduce operating costs while extending gear and pinion life.



Beneficial Qualities

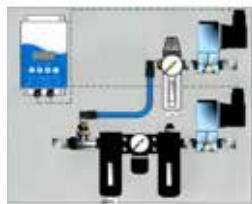
- Compatible with high viscosity synthetic open gear lubricants
- Controlled intermittent lubricant spray with unmatched pattern accuracy
- Programmable controller for simple adjustability
- After-blow to purge nozzles of grease
- Reduced vibration and noise
- Standalone design can be retrofitted with ease
- Proper lubrication combined with the correct LE open gear lubricant will help reduce gear temperatures during operation and reduce wear rates of pinion and bull gears.

Optional Features

- Heated nozzles and enclosures for cold operating environments
- Spray nozzles with push-button clean-out capability
- Custom enclosures to provide "plug and play" installation
- After blow for cleaning nozzles



Valve



Control Panel



Spray Lance



Drum Pump

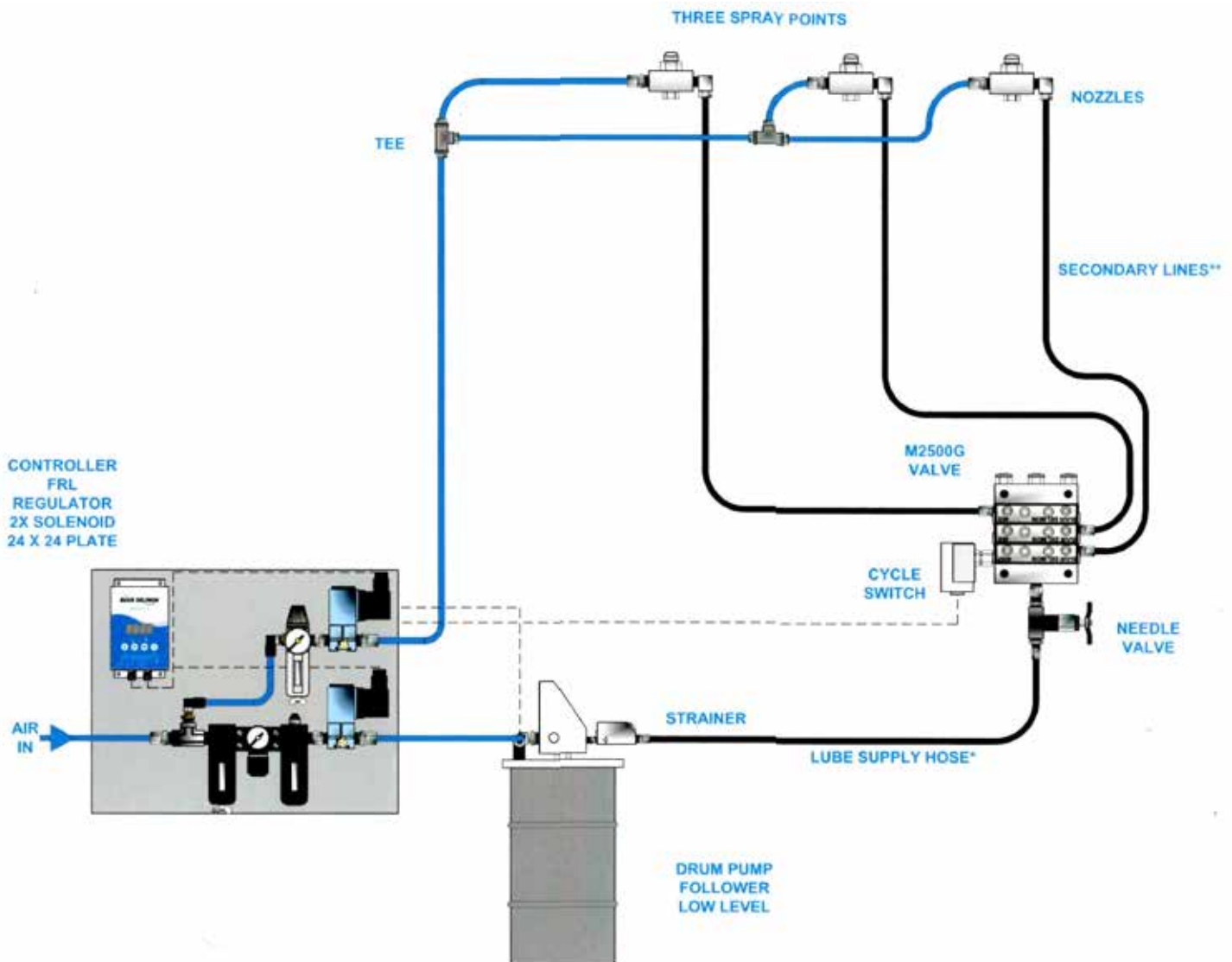
System Components



Xport Open Gear Spray Systems (small gear)

- For open gears less than 18 inches wide
- Available in one-, two- and three-nozzle configurations
- Standard with 120-lb drum pump (35-lb, 400-lb drums optional)
- Standard voltage 120 VAC
- Optional voltage 24 VDC, 240 VAC
- Optional enclosure for panel

Part Number	Description
LEX-OPNGRSPRKT-1	One-Nozzle Spray System
LEX-OPNGRSPRKT-2	Two-Nozzle Spray System
LEX-OPNGRSPRKT-3	Three-Nozzle Spray System



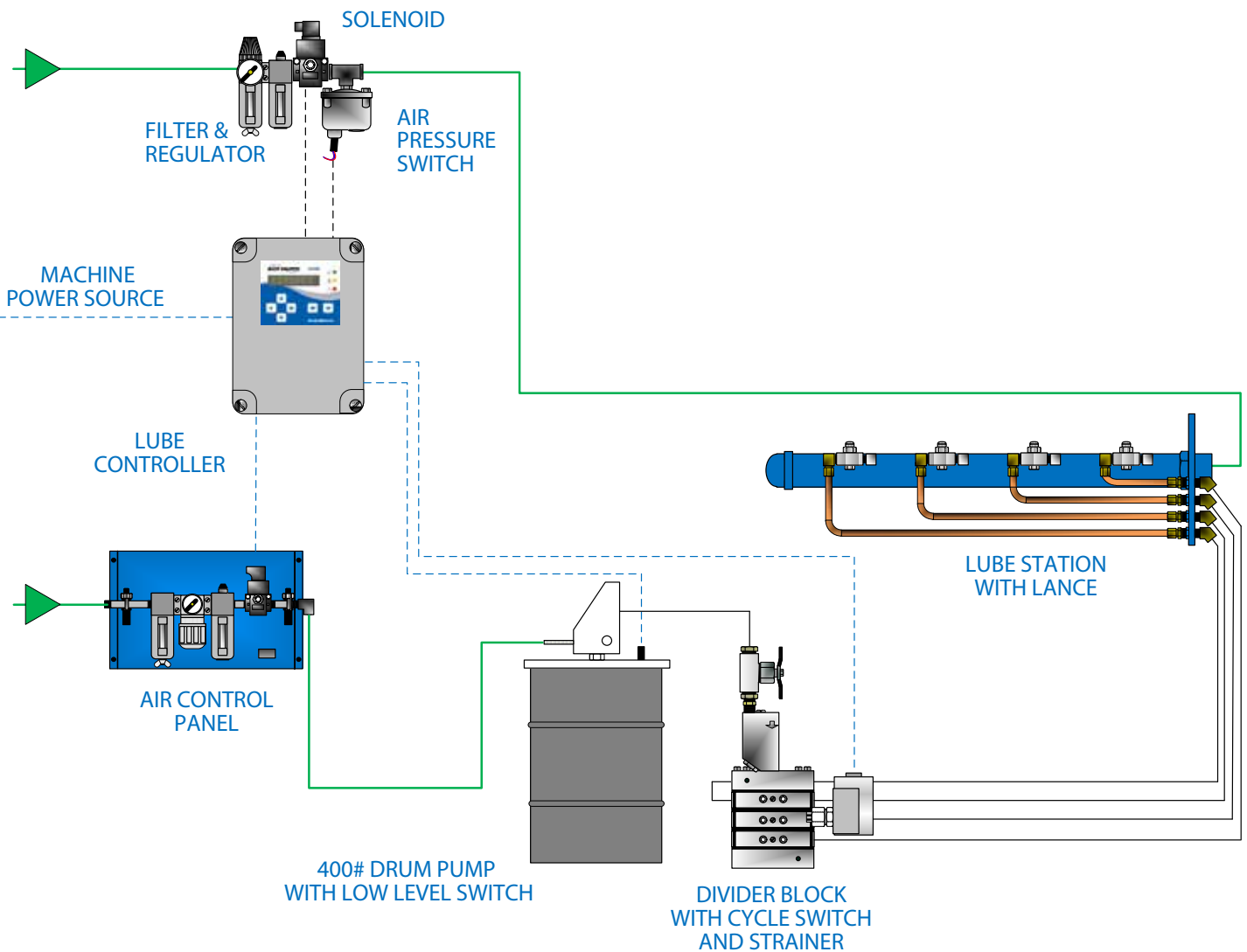
System Components



Xport Open Gear Spray Systems (large gear)

- For open gears larger than 18 inches wide
- “Spray Lance” delivery system included (see page 4 for options)
- Standard with 400-lb drum pump

Call for customized design and quote based on application requirements.



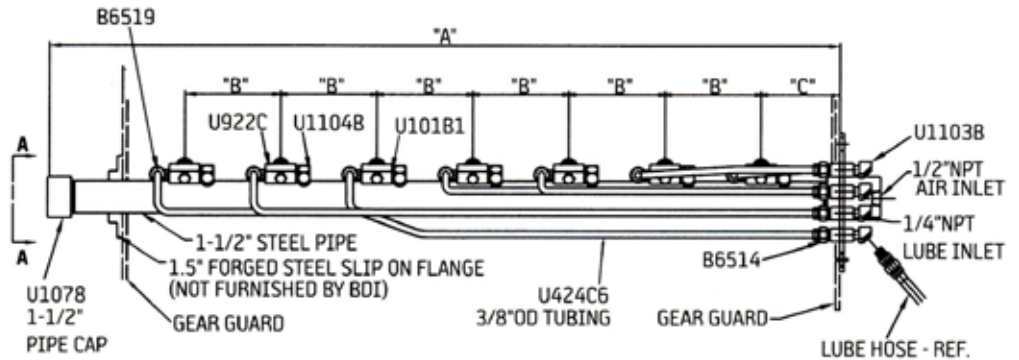
System Components



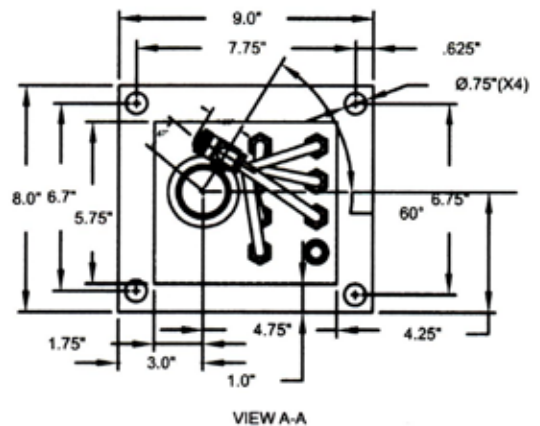
Xport Open Gear Spray Lance Options (large systems)

Spray Lance Model LD-9327

The spray lances listed below include spray nozzles in which air under pressure atomizes lubricant from the valve panels and sprays it onto the gear face. Note that guard width must be exactly 2 1/2" wider than gear face width.



ASSEMBLY PART #	GEAR FACE WIDTH	GUARD WIDTH	NO. OF SPRAY NOZZLES	DIMENSIONS		
				A	B +/- 1/16"	C +/- 1/16"
LD93271020S	2"	4.5"	1	8"	-	2.25
LD93271030S	3"	5.5"	1	10"	-	2.75
LD93271040S	4"	6.5"	1	11"	-	3.25
LD93271050S	5"	7.5"	1	12"	-	3.75
LD93271060S	6"	8.5"	1	13"	-	4.50
LD93272070S	7"	9.5"	2	14"	4.00	2.25
LD93272080S	8"	10.5"	2	15"	4.50	3.00
LD93272090S	9"	11.5"	2	16"	4.50	3.50
LD93272100S	10"	12.5"	2	17"	5.00	3.75
LD93272110S	11"	13.5"	2	18"	5.25	4.13
LD93273120S	12"	14.5"	3	19"	4.38	2.87
LD93273130S	13"	15.5"	3	20"	4.38	3.37
LD93273140S	14"	16.5"	3	21"	4.68	3.57
LD93273150S	15"	17.5"	3	22"	5.00	3.75
LD93273160S	16"	18.5"	3	23"	5.25	4.00
LD93274170S	17"	19.5"	4	24"	4.50	3.00
LD93274180S	18"	20.5"	4	25"	4.50	3.50
LD93274190S	19"	21.5"	4	26"	4.75	3.75
LD93274200S	20"	22.5"	4	27"	5.00	4.00
LD93274210S	21"	23.5"	4	28"	5.25	3.88
LD93275220S	22"	24.5"	5	29"	4.50	3.25
LD93275230S	23"	25.5"	5	30"	4.75	3.50
LD93275240S	24"	26.6"	5	31"	5.00	3.75
LD93275250S	25"	27.5"	5	32"	5.25	4.00
LD93276260S	26"	28.5"	6	33"	4.38	3.30
LD93276270S	27"	29.5"	6	34"	4.38	3.80
LD93276280S	28"	30.5"	6	35"	4.68	3.55
LD93276290S	29"	31.5"	6	36"	4.68	4.05
LD93276300S	30"	32.5"	6	37"	5.00	3.75
LD93276310S	31"	33.5"	6	38"	5.25	3.63
LD93277320S	32"	34.5"	7	39"	4.38	4.11
LD93277330S	33"	35.5"	7	40"	4.68	3.71
LD93277340S	34"	36.5"	7	41"	5.00	3.25
LD93277350S	35"	37.5"	7	42"	5.00	3.75
LD93277360S	36"	38.5"	7	43"	5.25	3.50
LD93277370S	37"	39.5"	7	44"	5.25	4.00
LD93278380S	38"	40.5"	8	45"	4.68	3.87
LD93278390S	39"	41.5"	8	46"	4.80	3.95
LD93278400S	40"	42.5"	8	47"	5.00	3.75
LD93278410S	41"	43.5"	8	48"	5.10	3.90
LD93278420S	42"	44.5"	8	49"	5.25	3.88



NOTE: Spray lances are shipped with round spray nozzles installed. Flat spray nozzle set is also included with each spray lance. Please contact your local rep for more information.