

Product Information



Ultra RDE Oil (8900)

For Heavy-Duty, Long-Drain Service in Railroad, Marine and Stationary Generator Engines

Formulated with highly refined select base oils, zinc-free additives and an effective detergent package, LE's Ultra RDE Oil is a heavy-duty engine oil intended for use in two- and four-cycle diesel engines, including those with silver alloy bearings. It is a proven performer, providing clean, long-lasting service in railroad, marine and stationary generator engines.

Compared to competitive commercial lubricants, Ultra RDE provides greater lubrication and wear protection in the ring cylinder interface, resulting in improved compression, reduced blowby into the crankcase, and reduced stack splatter. Users also report elimination of chronic fuel dilution in gen set applications.

Beneficial Qualities

Eliminates Piston Ring Instability

- Provides a robust lubricant film in the ring cylinder interface, supporting stable ring alignment and maximum combustion gas seal under heavy loads

Provides Extended Wear Protection

- Extends ring life
- Lengthens periods between overhauls
- Reduces downtime and maintenance costs

Ensures Superior Performance

- Provides exceptional rust protection
- Prevents foam buildup in service
- Reduces fuel dilution

Improves Housekeeping

- Reduces oil consumption and waste
- Controls and safely removes varnish and sludge deposits from crankcase and rocker assemblies
- Controls blowby into the crankcase
- Reduces messy exhaust stack splatter
- Reduces soot contamination





Technical Data

Ultra RDE Oil (8900)

	8900
Color	Red
ISO VG / SAE Grade	40
Gravity °API, ASTM D1298	27.9
Viscosity @ 100°C, cSt, ASTM D445	14.4
Viscosity @ 40°C, cSt, ASTM D445	140
Viscosity Index ASTM D2270	95 min.
Viscosity-HTHS @ 150°C, cP, ASTM D4684	3.7 min.
Flash Point °C (°F), (COC), ASTM D92	238 (460)
Fire Point °C (°F), (COC), ASTM D92	260 (500)
Pour Point °C (°F), ASTM D97	-9 (15)
Base Number ASTM D2896	13.0

Applications

(in which Ultra RDE has been used successfully)

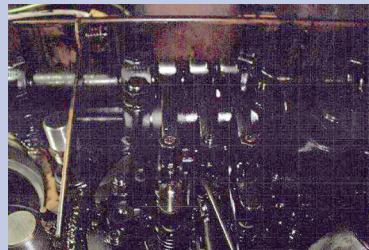
- EMD Railroad Diesel Engines
- GE Railroad Diesel Engines
- Fairbanks-Morse Stationary Gen Sets
- Marine Diesel Engine Applications

Performance Requirements

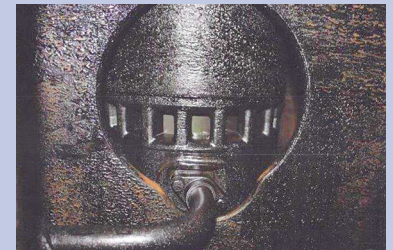
Met or Exceeded

- EMD Railroad Diesel Engines – LMOA Generation 5
- GE Railroad Diesel Engines – Generation 4 Long Life
- Caterpillar 3600 Mixed Fleet Operation
- API CD, CF, CF-2 (only monograde)

EMD Engine with Commercial Oil

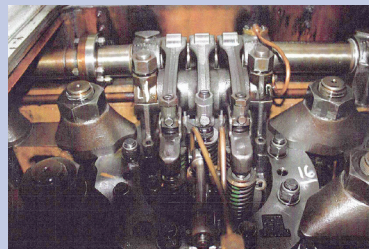


Engine Head

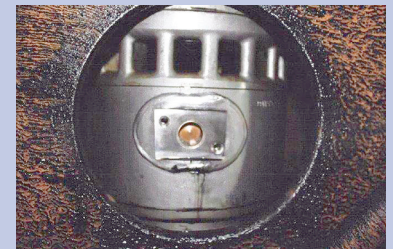


Engine Cylinder

EMD Engine with Ultra LDE



Engine Head



Engine Cylinder

LI50046 5-10, rev. 10-24